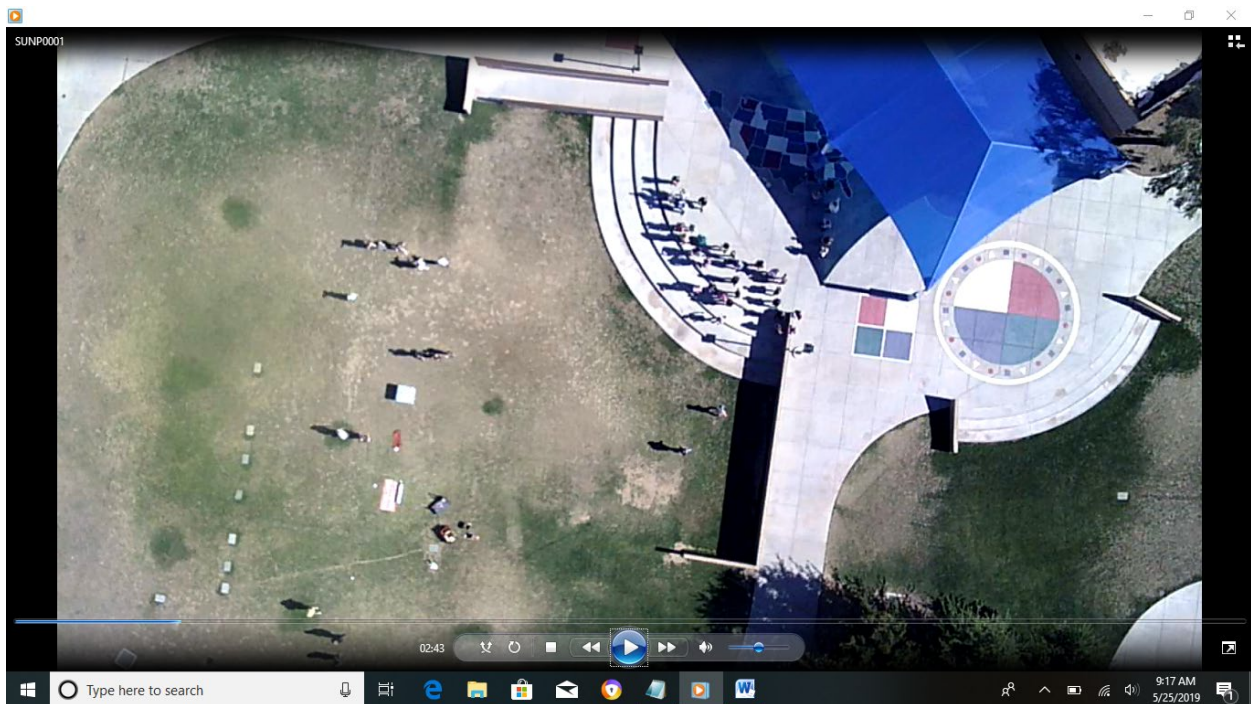
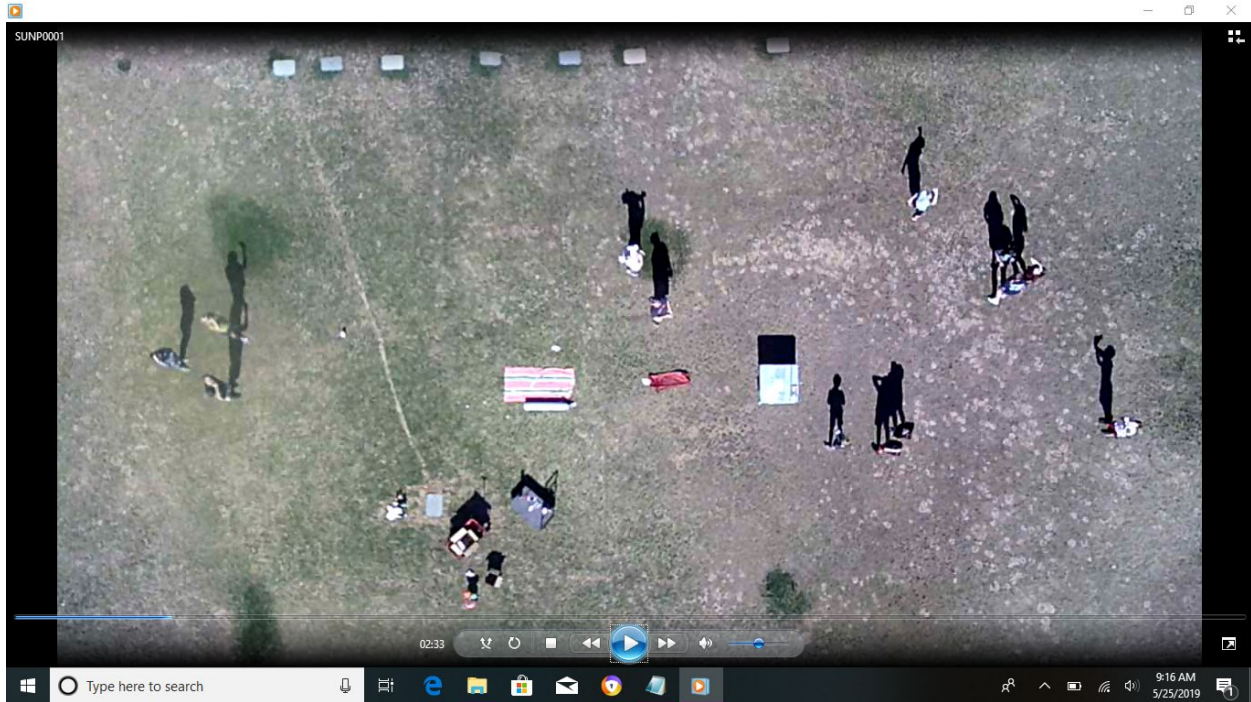
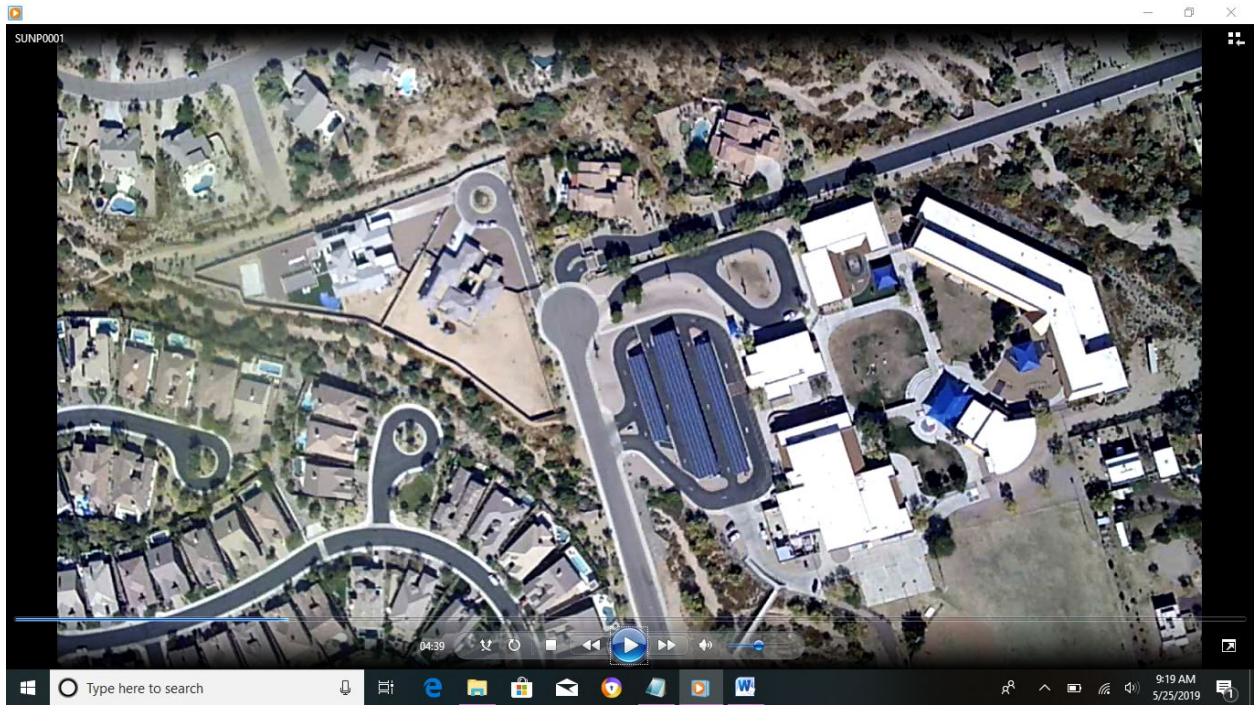
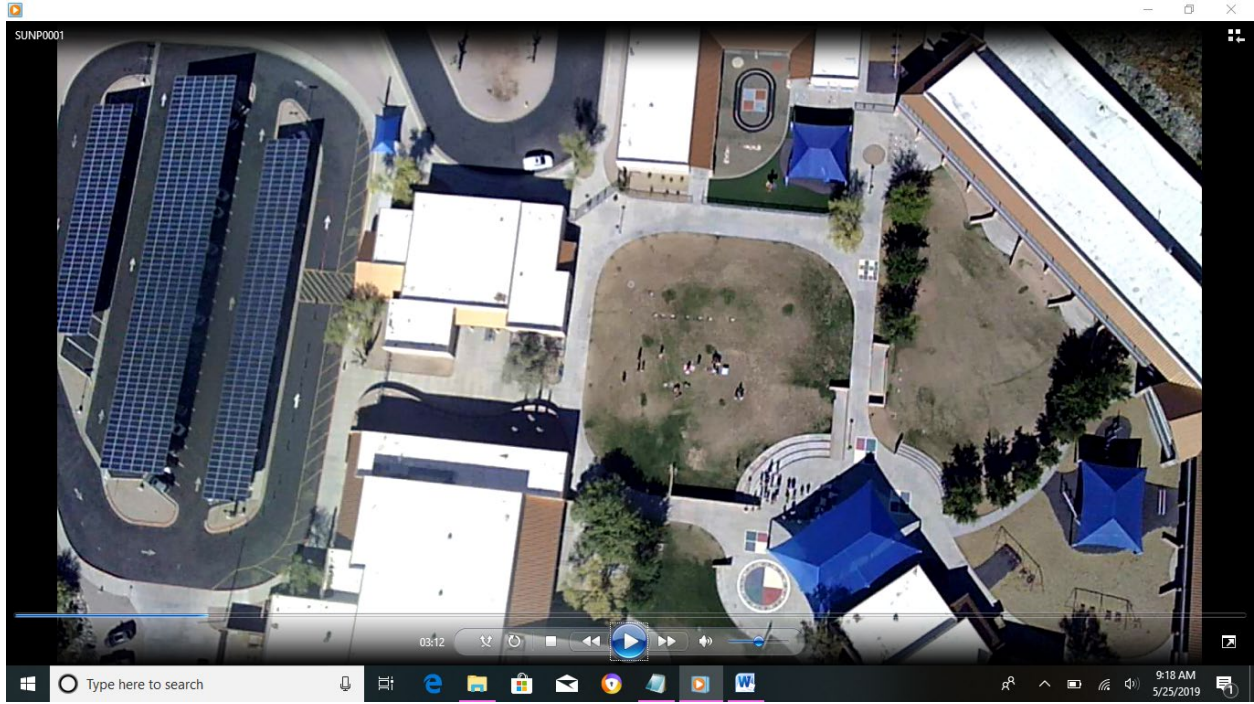


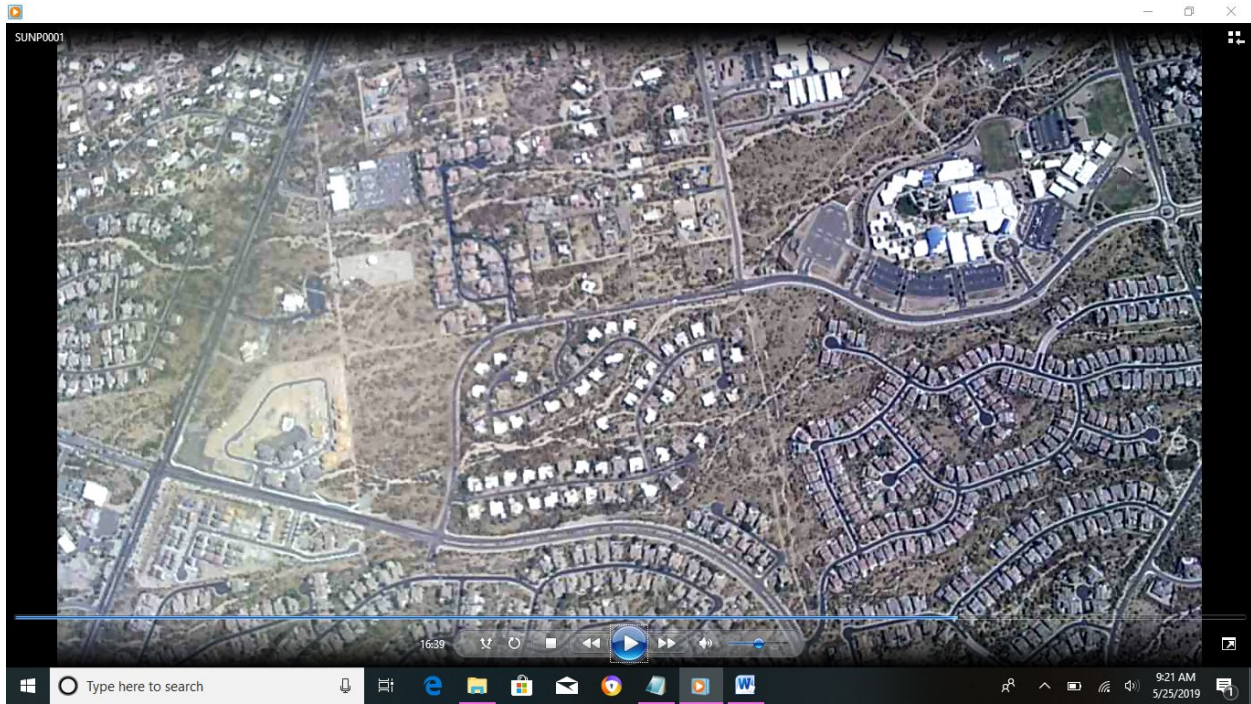
LMES Weather Club Launch: May 24, 2019

Maximum Altitude: 100,538 feet

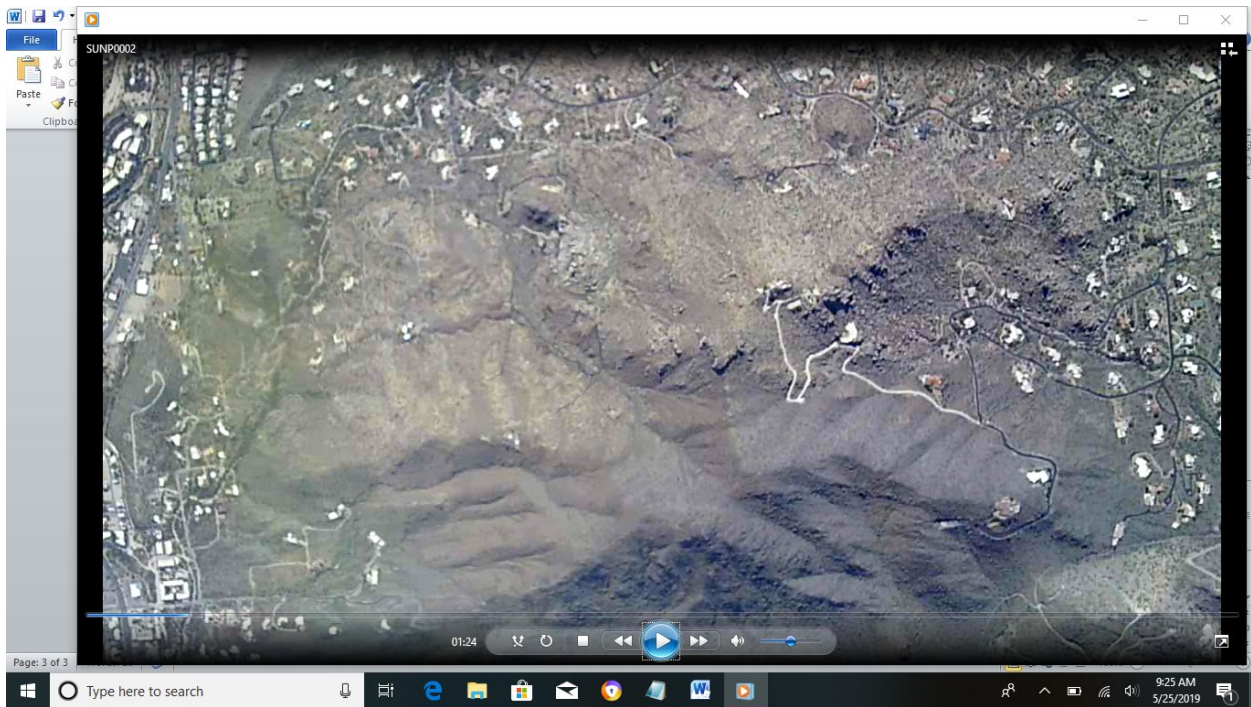
Launch: LMES Landing: 9 miles southwest of Winslow, AZ







Cactus Shadows HS



Black Mountain





Horseshoe, Bartlett and Roosevelt Lakes (back right)



Tonto Creek



Mogollon Rim, Payson, AZ ~70,000 ft



Mt Humphries, 85,000 ft (can you find it?)



95,000 ft



Balloon Burst Point – 100,538 ft